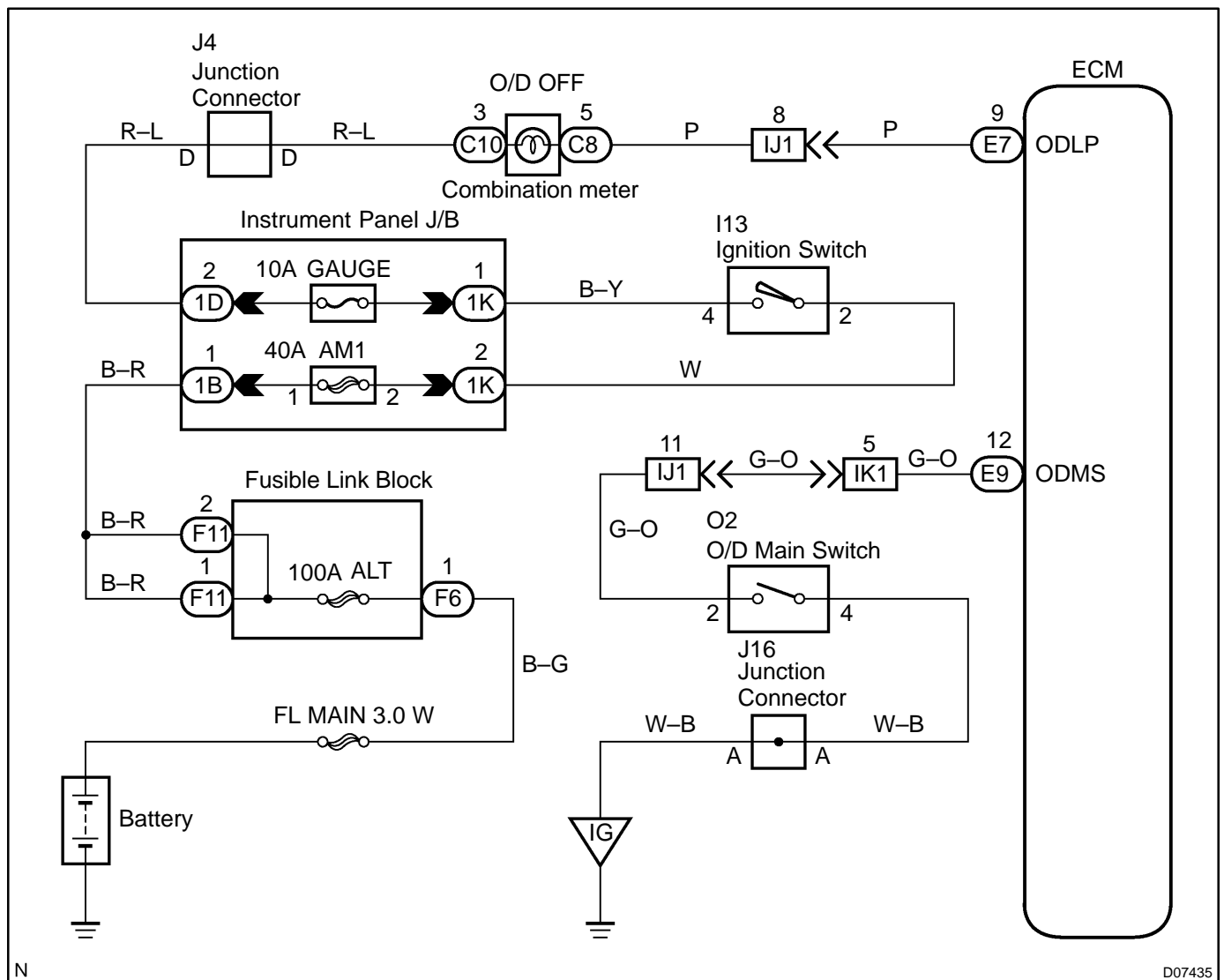


O/D Main Switch & O/D OFF Indicator Light Circuit

CIRCUIT DESCRIPTION

The O/D main switch is a momentary type switch. When pressing the O/D main switch, the O/D OFF indicator light lights up and the ECM prohibits shifting into O/D, and when pressing it once again, the O/D OFF indicator light goes off and the ECM allows shifting into O/D. Turning the IG switch OFF will reset the O/D OFF indicator light.

WIRING DIAGRAM



INSPECTION PROCEDURE**1 Check operation of O/D main switch.****PREPARATION:**

Turn the ignition switch ON.

CHECK:

- (a) Check the O/D OFF indicator light when the O/D main switch is pressed into ON.
- (b) Check the O/D OFF indicator light when the O/D main switch is pressed once again.

OK:

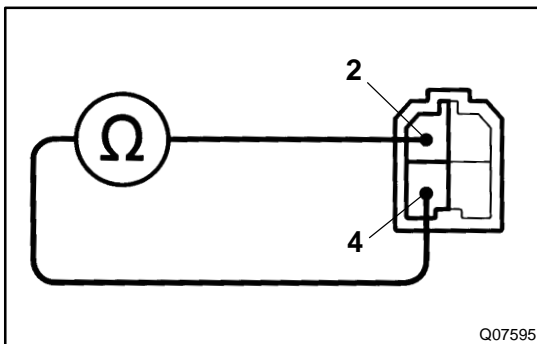
- (a) O/D OFF indicator light lights up.
- (b) O/D OFF indicator light goes off.

OK

Proceed to next inspection shown on problem symptoms table (See page [DI-177](#)).

NG**2 Check and replace combination meter (See page [BE-65](#)).****NG**

Replace combination meter.

OK**3 Check O/D main switch.****PREPARATION:**

Disconnect the O/D main switch connector.

CHECK:

Check continuity between terminals 2 and 4 of the O/D main switch connector.

OK:

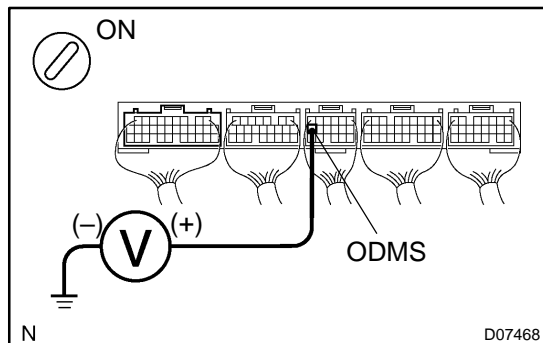
O/D main switch condition	Specified condition
Press continuously O/D main switch	Continuity
Release O/D main switch	No continuity

NG

Replace and repair O/D main switch.

OK

4 Check voltage between terminal ODMS of ECM and body ground.

**PREPARATION:**

Turn the ignition switch ON.

CHECK:

Check the voltage between terminal ODMS of the ECM and the body ground when the O/D main switch is ON and OFF.

OK:

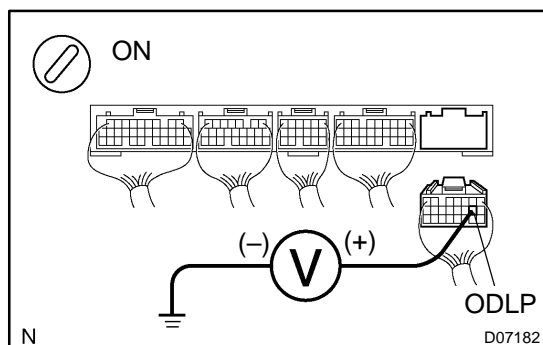
O/D main switch condition	Specified voltage
Press continuously O/D main switch	Below 1.0 V
Release O/D main switch	10 – 14 V

OK

Check and replace ECM (See page [IN-31](#)).

NG

5 Check voltage between terminal ODLP of ECM and body ground.

**PREPARATION:**

- Disconnect the connector of the ECM.
- Turn the ignition switch ON.

CHECK:

Check the voltage between terminal ODLP of the ECM and the body ground.

OK:

Voltage: 7.5 – 14 V

OK

Check and replace ECM (See page [IN-31](#)).

NG

Check and replace harness and connector between combination meter and ECM, O/D main switch and ECM, O/D main switch and body ground (See page [IN-31](#)).